

13 August 2025

## **Rover Way Closure Notice**

### **Advanced Notice of Essential Road Closure and Night Works**

Dear Residents, Stakeholders, and Road Users,

We are writing to inform you of essential construction works and associated road closures on Rover Way. These works form part of the Cardiff Coastal Defence Scheme and are necessary to improve safety and resilience along the riverbank.

#### **Key details of the road closure:**

**Location:** From Seawall Road to Lamby Way roundabout

**Duration:** 4 weeks from Monday 18 August

**Hours of closure:** Nightly from 7:00 pm to 5:30 am

**Applies to:** All road users during the stated hours

#### **Access arrangements during the closure:**

- Residents at the Traveller site: Access will be maintained.
- Tesco: Access will remain available via Ffordd Pengam.
- Diversion: A diversion route map is attached. Please use the designated diversions and allow extra time for journeys.

#### **Purpose of the works:**

The closure is required to safely deliver critical works, including the construction of a stone pile mat along Rover Way. This foundation is essential for installing sheet piles that will stabilise nearby structures along the riverbank. Due to site constraints, the work must be carried out within the road space to ensure a safe and long-lasting upgrade.

#### **Working together:**

We understand these works may cause inconvenience, and we are committed to keeping disruption to a minimum while prioritising safety. Thank you for your cooperation and patience as we complete these improvements for the benefit of the whole community.

#### **Contact us:**

If you have any questions or require assistance, please get in touch with our team:

Email: [Cardiffcds@knightsbrown.co.uk](mailto:Cardiffcds@knightsbrown.co.uk)

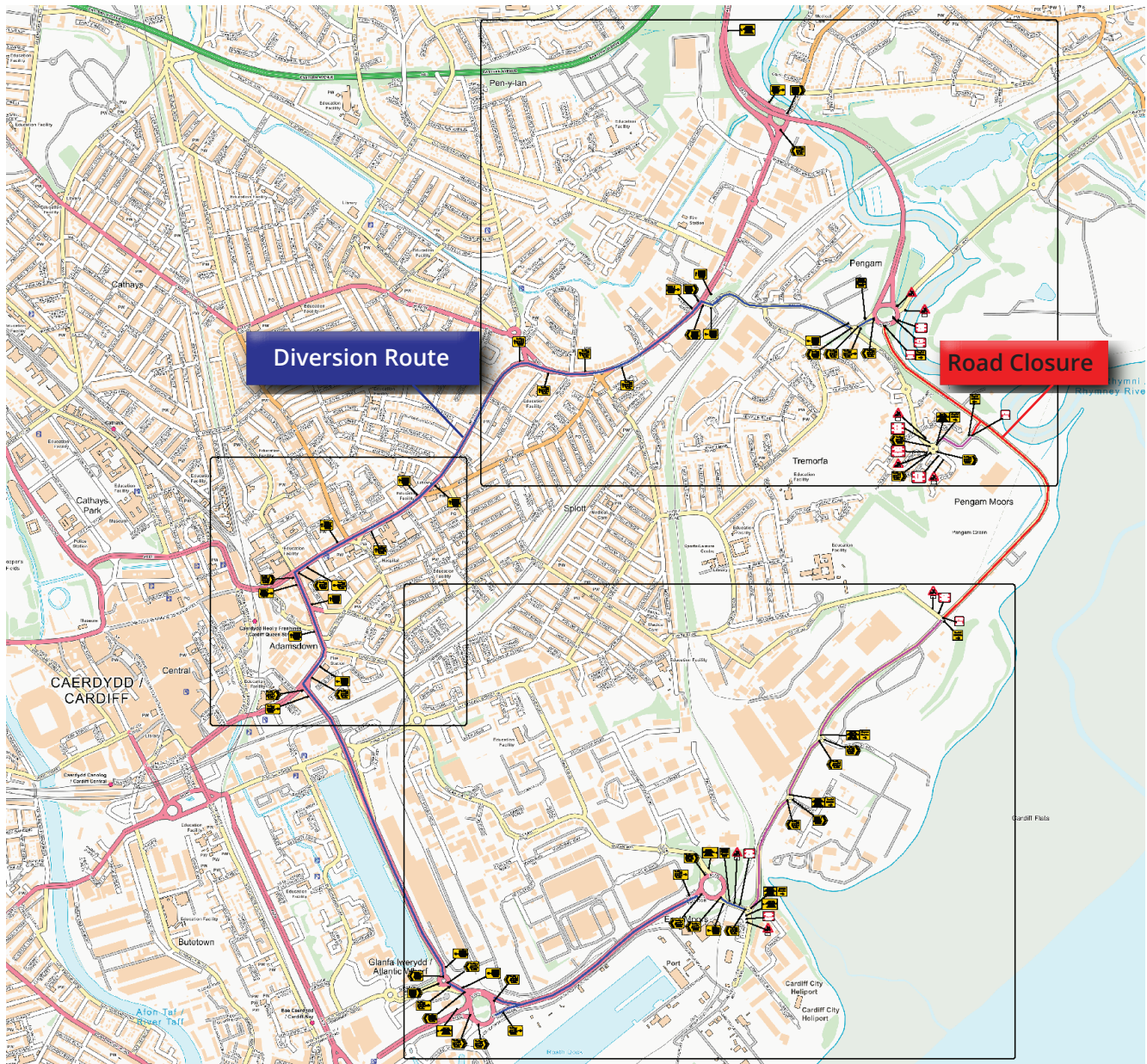
Phone: 07977 091261 / 07818 432183

Thank you for your support.

Yours faithfully,

Cardiff Coastal Defence Scheme Team

## DIVERSION ROUTE



FIND OUT MORE: [WWW.CARDIFFCDS.COM](http://WWW.CARDIFFCDS.COM)